

# Majestic

Words and Music by  
Lincoln Brewster

♩ = 121



O Lord, our Lord, how ma - jes - tic is Your name



in all the earth; O Lord, our Lord, how ma -



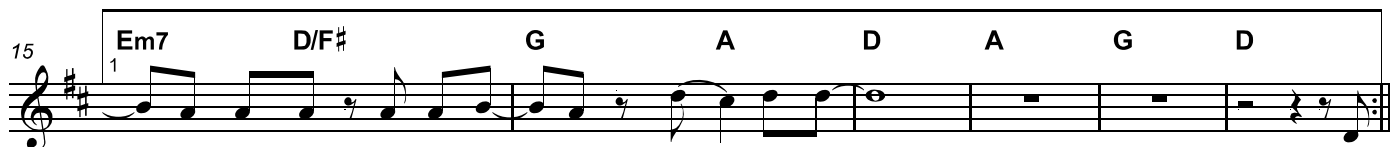
jes - tic is Your name in all the earth. The heav - ens de -



clare Your great - ness; The o - ceans cry out to You;




The moun - tains, they bow down be - fore You, so I'll join



with the earth and I'll give my praise to You. O

Majestic - 2

21 **Em7** **D/F#** **G** **A** *D.S.*



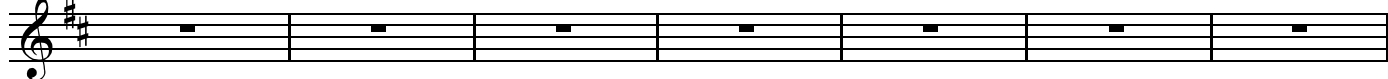
— with the earth and I'll sing. — The heav - ens — de -

23 **Em7** **D/F#** **G** **A** **D**



— with the earth and I'll give — my praise — to You. —

26 **A** **G** **D** **A** **G** **D**

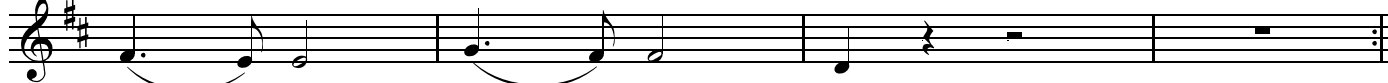


33 **D** **G**



I — will wor - ship You,

37 **D** **G**



I — will wor - ship You;

41 **D5** **D5/C#** **D5/F#** **D5/G**



We — will wor - ship You;

45 **D5/B** **D5/F#** **D5/G** **A**



We — will wor - ship You. The heav - ens — de -

Majestic - 3

49 **G** **D** **G**

clare Your\_\_\_ great - ness; The o - ceans\_\_\_ cry out to\_\_\_ You;\_\_\_

Detailed description: This block contains the first line of music, starting at measure 49. It features a treble clef and a key signature of two sharps (F# and C#). The melody consists of quarter and eighth notes. Chord symbols G, D, and G are placed above the staff. The lyrics are: "clare Your\_\_\_ great - ness; The o - ceans\_\_\_ cry out to\_\_\_ You;\_\_\_".

52 **Bm7** **G** **D/F#**

\_\_\_ The moun - tains,\_\_\_ they bow down\_\_\_ be - fore\_\_\_ You,\_\_\_ so I'll join\_\_\_

Detailed description: This block contains the second line of music, starting at measure 52. It features a treble clef and a key signature of two sharps. The melody continues with quarter and eighth notes. Chord symbols Bm7, G, and D/F# are placed above the staff. The lyrics are: "\_\_\_ The moun - tains,\_\_\_ they bow down\_\_\_ be - fore\_\_\_ You,\_\_\_ so I'll join\_\_\_".

55 **Em7** **D/F#** **G** **A**

\_\_\_ with the earth and I'll sing.\_\_\_\_\_ The heav - ens\_\_\_ de -

Detailed description: This block contains the third line of music, starting at measure 55. It features a treble clef and a key signature of two sharps. The melody continues with quarter and eighth notes. Chord symbols Em7, D/F#, G, and A are placed above the staff. The lyrics are: "\_\_\_ with the earth and I'll sing.\_\_\_\_\_ The heav - ens\_\_\_ de -".

57 **Em7** **D/F#** **G** **A** **D**

\_\_\_ with the earth and I'll give\_\_\_ my praise\_\_\_ to You.\_\_\_\_

Detailed description: This block contains the fourth line of music, starting at measure 57. It features a treble clef and a key signature of two sharps. The melody continues with quarter and eighth notes. Chord symbols Em7, D/F#, G, A, and D are placed above the staff. The lyrics are: "\_\_\_ with the earth and I'll give\_\_\_ my praise\_\_\_ to You.\_\_\_\_".

60 **A** **Em7** **D/F#** **G** **A** **D**

So I'll join\_\_\_ with the earth and I'll give\_\_\_ my praise\_\_\_ to You.\_\_\_\_

Detailed description: This block contains the fifth line of music, starting at measure 60. It features a treble clef and a key signature of two sharps. The melody continues with quarter and eighth notes. Chord symbols A, Em7, D/F#, G, A, and D are placed above the staff. The lyrics are: "So I'll join\_\_\_ with the earth and I'll give\_\_\_ my praise\_\_\_ to You.\_\_\_\_".